



DTH Bits

Drilling Tools

Product Catalogue

About Us

DRILLCO® is at the forefront of innovation in the drilling industry, developing cutting-edge products and services that boost productivity, reduce downtime, and lower environmental impact.

With significant investments in R&D and partnerships with top universities, **DRILLCO®** leverages advanced simulation software to create bespoke consumables, equipment, and drilling services designed for optimal performance.

As a Chilean multinational, **DRILLCO®** specializes in providing state-of-the-art technological solutions for soil drilling in various sectors, including mining, geothermal, quarrying, water wells, and civil engineering projects.

Our modern 5,000 m² production facility in Quilicura boasts an impressive annual output capacity of 24,000 products, ensuring we meet the growing demands of our global clientele.

Exporting 85% of our products to 35 countries across the Americas, Africa, Europe, and Oceania, Drillco has achieved an average annual growth rate of 20% over the past three years, underscoring our commitment to excellence and innovation.

¿Why DRILLCO® ?

Today, with over 50 years of expertise in hard rock drilling, **DRILLCO®** stands as the leader in mining drilling, boasting a presence in more than 30 countries through its 10 international branches. The **PUMA® BY DRILLCO®** brand is a hallmark of quality and innovation, with **PUMA®** products in use from the Arctic Circle to Patagonia and from Siberia to the Sahara Desert.

At **DRILLCO®**, our mission is to deliver the lowest cost per meter in the market by tailoring our products to meet the unique requirements of each client.

This commitment to customization enables us to provide products specifically designed for every rock condition, ensuring a seamless user experience and helping our clients achieve their operational and economic objectives with ease.



INSERT TYPES



Dome shape tungsten insert

DRILLCO®'s dome-shaped insert is engineered to provide optimal resistance against wear and impact, making it ideal for drilling in hard and abrasive formations. Its rounded profile enhances the cutting action by distributing pressure evenly, which reduces the likelihood of fracturing the insert. This design also aids in minimizing damage to the surrounding rock, facilitating smoother drilling operations and extending the overall lifespan of the product.



Flat shape tungsten insert

DRILLCO®'s flat shape insert has a cylindrical body with a flat, level top surface.

Unlike conical or ballistic inserts, the cutting face of a flat insert is not pointed or rounded but rather flat and broad.

This design increases the protection of the surface area of the die (steel) in contact with the material being drilled.



Conical shape tungsten insert

DRILLCO®'s conical insert features a conical design that enhances its ability to penetrate hard and abrasive formations.

Its pointed tip facilitates effective rock breaking and reduces wear on the insert. The conical shape also improves the insert's stability during drilling, making it suitable for applications where directional control and efficient cutting are essential.



Ballistic tungsten insert

DRILLCO®'s ballistic shape is optimized for cutting through soft and medium hard formations, where a sharper, more focused point is required to efficiently break the rock.

The ballistic design allows for faster drilling speeds compared to other insert shapes, as it minimizes the surface area in contact with the rock, reducing drag.

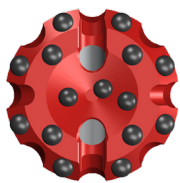
DTH BITS

Drillco offers a comprehensive range of drill bits designed to meet the diverse needs of the drilling industry. Our extensive selection includes drill bits suitable for every application, ensuring you have the right tool for the job, no matter the challenge.



BIT DESIGN

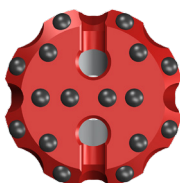
Concave



Rock
Semihard and homogeneous.

Benefits
Excellent air flush
Optimum control on deviations.

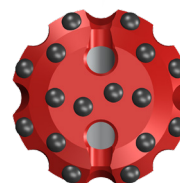
Flat



Rock
Hard and/or regular.

Benefits
Suitable for fractured ground.
Most versatile.

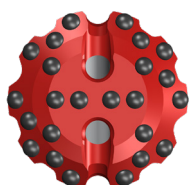
Dome



Rock
Very hard and abrasive.

Benefits
Maximum protection to peripheral insert.

Dome double gauge



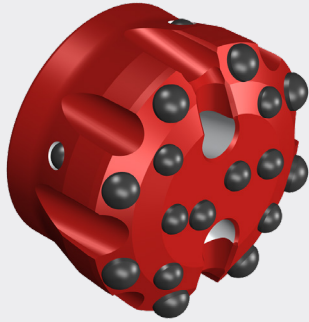
Rock
Very hard and abrasive.

Benefits
Maximum protection to spherical inserts.



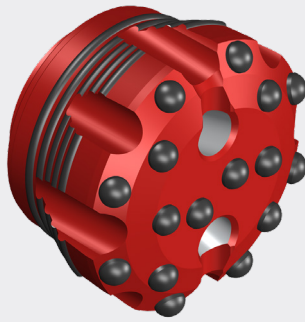
INSERT CONFIGURATIONS

RETRACTABLE



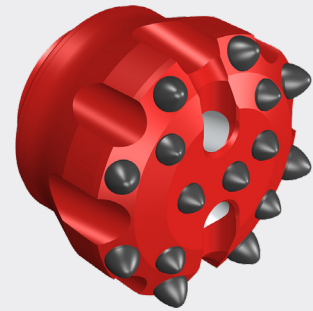
Recommended when operating on very fractured grounds and/or when discarded for the gauge wear.

WELDING



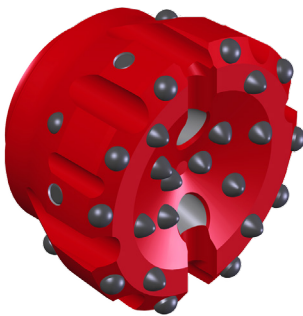
Recommended for non-consolidated grounds and/or with scrap flushing problems.

BALLISTIC



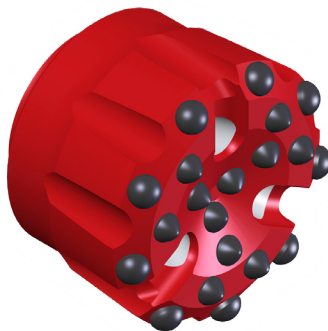
Recommended for soft and homogeneous rocks with low abrasiveness.

LATERAL



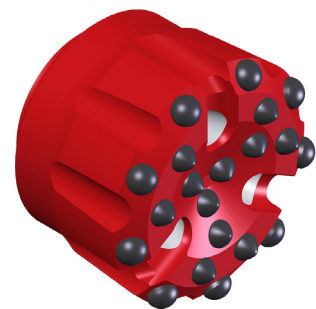
Recommended for large diameter bits operating on non-consolidated ground.

SPHERICAL



Recommended for medium to low hard rock, high abrasive.

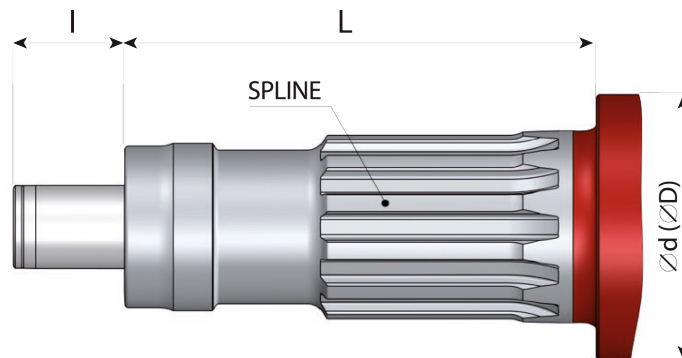
BALLISTIC SPHERICAL



Recommended for soft rocks but with harder areas, and with low or medium abrasiveness.



TYPES OF SHANKS AND BITS DIMENSIONS



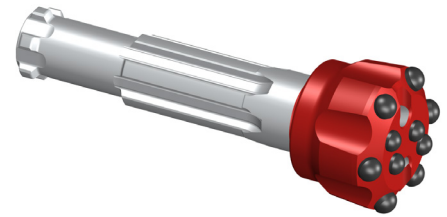
RANGE	TYPE	L LENGTH SHANK	l LENGTH OUTLET FOOT VALVE	Ød (ØD) Ø CHUCK BIT SIDE LENGTH	NUMBER OF SPLINES
2"	BULROC-2HDW	164	No FV	62	6
3"	DHD-3.5	181	58.5	81	8
	BULROC-3	165	No FV	75	6
4"	T- D- 4- 0	209	87	101	12
	DHD-340	209	45	94/98	8
	SD-4	260	53	98	8
	QL50	240.3	53	117/120-136	12
5"	DHD-350	260	63	118	8
	SD-5	260	55	118/121	8
	P5SH	194.5	48	122/126	12
	QL60	254	59	140/146	12
6"	DHD-360	307	56	140/146	8
	SD-6	324	54	140/146	8
7"	PUMA-7.1	336	57	175	12
	QL80	332	53.5	185/190	16
8"	DHD-380	349.5	53	180/185	10
	SD-8	321	57	175	8
9"	PUMA-8.1	350	55	180/185	16
	PUMA-9.1	378	55	212/218	12

AVAILABLE BIT DIAMETERS

INCH	MM	PUMA 2	PUMA 3	PUMA 4	PUMA 5	PUMA 6	PUMA 7	PUMA 8	PUMA 9
2 7/8"	73	●							
3"	76	●							
3 1/4"	83	●							
3 1/2"	90		●						
3 5/8"	92		●						
3 3/4"	95		●						
4"	102		●						
4 1/8"	105		●						
4 1/4"	108			●					
4 1/2"	115			●					
4 3/4"	121			●					
5"	127			●					
5 1/8"	130			●	●				
5 1/4"	134			●	●				
5 1/2"	140			● *	●				
5 3/4"	146				●				
5 7/8"	149				●				
6"	153				●	●			
6 1/8"	156					●			
6 1/4"	159					●			
6 1/2"	165					●			
6 3/4"	172					●			
7"	178					●			
7 1/2"	191					●			
7 5/8"	194					●			
7 7/8"	200					●	●	●	
8"	203					●	●	●	
8 1/2"	216					● *	●	●	
8 5/8"	219					● *	●	●	
8 3/4"	222						● *	●	
9"	229							●	
9 1/4"	235							●	
9 1/2"	241							●	●
9 7/8"	251							● *	●
10"	254							● *	●
10 5/8"	270								●
11"	279								● *
11 1/2"	292								●
12"	305								● *

* Special Applications

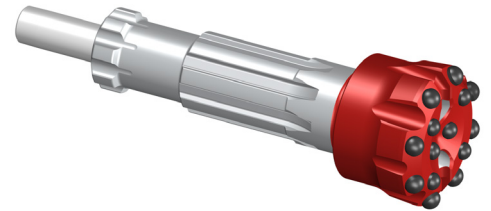
BULROC 2 shank (P2G) hammer



Features: _ Leggth #164,0mm / _6 Slipnes

Diameter		Code	Description	No. x Buton diameter, mm (inch)				Flushing holes	Weight Approx	
Inch	mm			Outer gauge 35°	Inner gauge 20°	Front 0°	Concavity 0°		kg	Lbs
3"	76.00	0204020000001	Flat Face	6x13 (1/2)		4x11 (7/16)		2	2,6	5,7
3"	76.00	0204050000046	Falt Face - Ballistic	6x13 (1/2)		4x11 (7/16)		2	2,6	5,7
FOOT VALVE : IT DOESN'T USE FOOT VALVE										

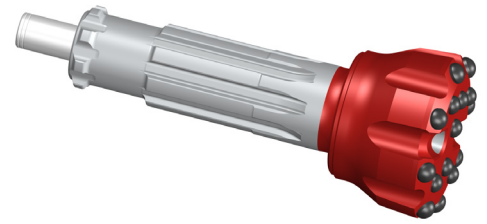
DHD-3.5 (P3.1) hammer



Features:_ Leggth shank = 181,0mm / _8 Splines / _ Height of Foot Valve above strike face = 58,5mm

Diameter		Code	Description	No. x Buton diameter, mm (inch)				Flushing holes	Weight Approx	
Inch	mm			Outer gauge 35°	Inner gauge 20°	Front 0°	Concavity 0°		kg	Lbs
3 11/32"	85.00	0204030000009	Dome	6x13 (1/2)	3x11 (7/16)	2x11 (7/16)		2	4,0	8,8
3 1/2"	90.00	0204030000002	Dome - Ballistic	6x13 (1/2)	4x11 (7/16)	2x11 (7/16)		2	4,4	9,7
3 1/2"	90.00	0204030000003	Dome	6x13 (1/2)	4x11 (7/16)	2x11 (7/16)		2	4,4	9,7
3 1/2"	90.00	0204030000021	Dome - A1	6x13 (1/2)	4x11 (7/16)	2x11 (7/16)		2	4,4	9,7
3 3/4"	95.00	0204030000012	Dome - Double Gauge	6x13 (1/2)	2x13 (1/2)	3x13 (1/2)		2	4,7	10,4
3 3/4"	95.00	0203040000013	Dome - Double Gauge Ballistic	6x13 (1/2)	2x13 (1/2)	3x13 (1/2)		2	4,7	10,4
4"	101.60	0203040000014	Dome - Double Gauge	8x13 (1/2)	4x11 (7/16)	3x11 (7/16)		2	5,0	11,0
4"	101.60	0203040000015	Dome - Double Gauge Ballistic	8x13 (1/2)	4x11 (7/16)	3x11 (7/16)		2	5,0	11,0
4 1/8"	105.00	0203040000025	Dome - Ballistic Special	8x13 (1/2)	4x13 (1/2)	3x13 (1/2)		2	6,2	13,7
4 27/32"	123.00	0203040000022	Dome	8x14 (9/16)	4x14 (9/16)	3x13 (1/2)		2	8,0	17,6
3 3/8"	86.00	0203040000023	Flat Face	6x13 (1/2)		6x11 (7/16)		2	4,6	10,1
3 5/8"	92.00	0203040000024	Flat Face - M1	8x14 (1/2)		6x11 (7/16)		2	4,9	10,8
3 5/8"	92.00	0203040000020	Concave	8x14 (1/2)		4x11 (7/16)	2x11 (7/16)	2	4,8	10,6

FOOT VALVE 0204030010000



DHD-340 shank (P4.2hp, PM4.3) hammer

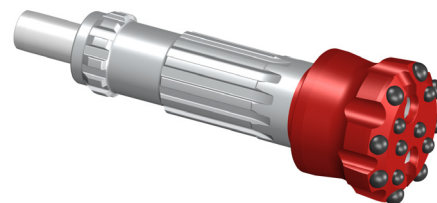
Features: _Length shank = 209mm / _8 Splines / _Height of Foot Valve above strike face = 45.0mm

Diameter		Code	Description	No. x Button diameter, mm (inch)				Flushing holes	Weight Approx	
Inch	mm			Outer gauge 35°	Inner gauge 20°	Front 0°	Concavity 0°		kg	Lbs
4 1/4"	108.00	0204040000001	Dome	8x13 (1/2)	4x13 (1/2)	3x13 (1/2)		2	8,2	18,1
4 1/2"	115.00	0204040000048	Dome - Heavy	8x16 (5/8)	4x13 (1/2)	3x13 (1/2)		2	8,9	19,6
4 1/2"	115.00	0204040000039	Dome - Ballistic	8x14 (9/16)	4x13 (1/2)	3x13 (1/2)		2	8,8	19,4
4 1/2"	115.00	0204040000040	Dome - Ballistic Spherical	8x14 (9/16)	4x13 (1/2)	3x13 (1/2)		2	8,8	19,4
4 1/2"	115.00	0204040000024	Dome	8x14 (9/16)	4x13 (1/2)	3x13 (1/2)		2	8,8	19,4
4 9/16"	116.00	0204040000071	Dome - Heavy	8x16 (5/8)	4x14 (9/16)	2x14 (9/16)		2	8,8	19,4
4 3/4"	121.00	0204040000054	Dome - Heavy	8x16 (5/8)	4x14 (9/16)	3x13 (1/2)		2	8,9	19,6
5"	127.00	0204040000091	Dome - Heavy Retractable	8x16 (5/8)	4x14 (9/16)	3x14 (9/16)		2	10,0	22,0
5"	127.00	0204040000057	Dome - Heavy	8x16 (5/8)	4x14 (9/16)	3x14 (9/16)		2	9,8	21,6
5"	127.00	0204040000090	Dome - Heavy*	8x16 (5/8)	4x14 (9/16)	3x14 (9/16)		2	9,8	21,6
5 3/4"	146.00	0204040000045	Dome - Heavy	8x19 (3/4)	4x16 (5/8)	4x16 (5/8)		2	11,6	25,6
4 1/4"	108.00	0204040000102	Flat Face - Heavy	8x14 (9/16)		6x13 (1/2)		2	8,0	17,6
4 5/16"	110.00	0204040000089	Flat Face - Ballistic Spherical	8x13 (1/2)		7x13 (1/2)		2	8,2	18,1
4 3/8"	111.00	0204040000103	Flat Face - Heavy	8x14 (9/16)		7x13 (1/2)		2	8,3	18,3
4 1/2"	115.00	0204040000109	Flat Face - Heavy A3	8x16 (5/8)		6x13 (1/2)		2	9,0	19,8
4 1/2"	115.00	0204040000014	Flat Face	8x14 (9/16)		8x13 (1/2)		2	8,8	19,4
5"	127.00	0204040000087	Flat Face - Heavy	8x16 (5/8)		7x14 (9/16)		2	9,7	21,4
4 1/8"	105.00	0204040000018	Concave	8x13 (1/2)		4x13 (1/2)	2x13 (1/2)	2	7,9	17,4
4 1/2"	115.00	0204040000007	Concave	8x14 (9/16)		4x13 (1/2)	2x13 (1/2)	2	8,8	19,4
4 3/4"	121.00	0204040000064	Concave - Retractable	8x14 (9/16)		4x13 (1/2)	3x13 (1/2)	2	9,2	20,3
5"	127.00	0204040000044	Concave - Heavy Ballistic	8x16 (5/8)		4x14 (9/16)	3x14 (9/16)	2	10,0	22,0
5"	127.00	0204040000043	Concave - Heavy	8x16 (5/8)		4x14 (9/16)	3x14 (9/16)	2	10,0	22,0
5 1/2"	140.00	0204040000021	Concave	8x16 (5/8)		4x16 (5/8)	3x16 (5/8)	2	11,2	24,7
6"	152.00	0204040000026	Concave	8x16 (5/8)		4x16 (5/8)	4x16 (5/8)	2	12,1	24,7
FOOT VALVE		0204060010013								

(*) : W = Variety of steel

(**) : B/S = Ballistic Spherical (Spherical buttons on Outer Gauge and ballistic button on the other positions)

TD40 shank (PM4.3, P402hp, 4HP SYN) hammer



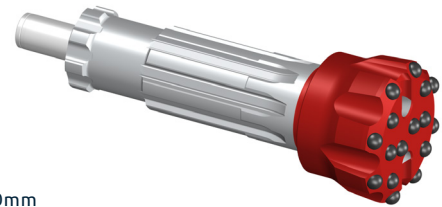
Features: _Shank length = 209mm / _12 Splines / _Height of Foot Valve above strike face = 57.0mm

Diameter		Code	Description	No. x Button diameter, mm (inch)				Flushing holes	Weight Approx	
Inch	mm			Outer gauge 35°	Inner gauge 20°	Front 0°	Concavity 0°		kg	Lbs
4 23/64"	110.00	0204040000144	Dome - A1 Ballistic	8x13 (5/8)	4x13 (1/2)	3x13 (1/2)		2	8,7	19,2
4 1/2"	115.00	0204040000096	Dome - Heavy	8x16 (5/8)	4x13 (1/2)	3x13 (1/2)		2	9,3	20,5
4 1/2"	115.00	0204040000148	Dome - B/S*	8x14 (9/16)	4x13 (1/2)	3x13 (1/2)		2	9,3	20,5
5"	127.00	0204040000094	Dome - Heavy	8x16 (5/8)	4x14 (9/16)	3x14 (9/16)		2	10,1	22,3
5"	127.00	0204040000149	Dome - Heavy B/S*	8x16 (5/8)	4x14 (9/16)	3x14 (9/16)		2	10,1	22,3
5"	127.00	0204040000172	Dome - Heavy A2	8x19 (3/4)	4x14 (9/16)	3x14 (9/16)		2	10,2	22,5
5 1/2"	140.00	0204040000127	Dome - Heavy Retractable	8x19 (3/4)	4x16 (5/8)	3x16 (5/8)		2	11,8	26,0
4 1/2"	115.00	0204040000101	Flat Face	8x14 (9/16)		8x13 (1/2)		2	9,3	20,5
4 1/2"	115.00	0204040000106	Flat Face - Heavy A3	8x16 (5/8)		6x13 (1/2)		2	9,4	20,7
4 1/2"	115.00	0204040000105	Flat Face - Heavy A2 B/S*	8x16 (5/8)		6x13 (1/2)		2	9,3	20,5
4 1/2"	115.00	0204040000104	Flat Face - Heavy A1 Ballistic	8x16 (5/8)		6x13 (1/2)		2	9,4	20,7
4 1/2"	115.00	0204040000122	Flat Face - A4	8x14 (9/16)		10x13 (1/2)		2	9,4	20,7
4 1/2"	115.50	0204040000138	Flat Face - Heavy Semiball. (CB)	8x16 (5/8)		6x13 (1/2)		2	9,6	21,2
4 1/2"	115.50	0204040000139	Flat Face - Heavy (FB)	8x16 (5/8)		6x13 (1/2)		2	9,6	21,2
4 1/2"	115.50	0204040000140	Flat Face - Heavy A6 (GT)	9x16 (5/8)		7x13 (1/2)		3	9,6	21,2
4 1/2"	115.50	0204040000141	Flat Face - Heavy (CB)	8x16 (5/8)		6x13 (1/2)		2	9,6	21,2
4 9/16"	115.80	0204040000173	Flat Face - Heavy (FB)	8x16 (5/8)		6x13 (1/2)		2	9,5	21,0
4 23/32"	120.00	0204040000145	Flat Face - Heavy	8x16 (5/8)		7x13 (1/2)		2	9,6	21,2
4 13/16"	122.00	0204040000113	Flat Face - Heavy B/S*	8x16 (5/8)		8x13 (1/2)		2	9,7	21,4
4 13/16"	122.00	0204040000114	Flat Face - Heavy	8x16 (5/8)		8x13 (1/2)		2	9,7	21,4
5"	127.00	0204040000112	Flat Face - Heavy Ballistic	8x16 (5/8)		8x13 (1/2)		2	10,1	22,3
5"	127.00	0204040000120	Flat Face - Heavy A1	8x16 (5/8)		7x14 (9/16)		2	10,1	22,3
5 1/8"	130.00	0204040000107	Flat Face	8x16 (5/8)		8x14 (9/16)		2	10,3	22,7
5"	127.00	0204040000121	Concave - Heavy	8x16 (5/8)		4x14 (9/16)	3x14 (9/16)	2	10,0	22,0
4 1/2"	115.00	0204040000100	Drop Center	8x14 (9/16)		4x13 (1/2)	3x13 (1/2)	2	9,2	20,3

FOOT VALVE 0204040010017

(*) : B/S = Ballistic Spherical (Spherical buttons on Outer Gauge and ballistic button on the other positions)

DHD-350 shank (PM5.2) hammer

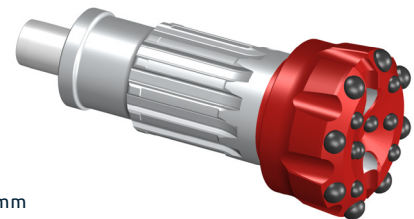


Features: _Length shank = 260mm / _8 Splines / _Height of Foot Valve above strike face = 63.0mm

Diameter		Code	Description	No. x Button diameter, mm (inch)				Flushing holes	Weight Approx	
Inch	mm			Outer gauge 35°	Inner gauge 20°	Front 0°	Concavity 0°		kg	Lbs
5 1/2"	140.00	0204050000032	Dome - B/S*	8x16 (5/8)	4x16 (5/8)	3x16 (5/8)		2	16,0	35,3
5 1/2"	140.00	0204050000046	Dome - Heavy	8x19 (3/4)	4x16 (5/8)	3x16 (5/8)		2	16,4	36,2
5 1/2"	140.00	0204050000063	Dome - Welding	8x16 (5/8)	4x16 (5/8)	3x16 (5/8)		2	16,0	35,3
5 3/4"	146.00	0204050000066	Dome - Heavy	8x19 (3/4)	4x16 (5/8)	4x16 (5/8)		2	16,6	36,6
5 1/2"	140.00	0204050000039	Flat Face - "Quarry"	8x16 (5/8)		8x16 (5/8)		2	16,7	36,8
5 3/4"	146.00	0204050000013	Flat Face - "Quarry"	8x16 (5/8)		8x16 (5/8)		2	17,6	38,8
5 1/8"	130.00	0204050000023	Concave	8x16 (5/8)		4x16 (5/8)	3x14 (9/16)	2	15,4	34,0
5 1/2"	140.00	0204050000001	Concave	8x16 (5/8)		4x16 (5/8)	3x16 (5/8)	2	16,6	36,6
5 3/4"	146.00	0204050000011	Concave - "Quarry"	8x16 (5/8)		4x16 (5/8)	4x16 (5/8)	2	16,5	36,4
5 7/8"	149.00	0204050000022	Concave	8x16 (5/8)		4x16 (5/8)	3x16 (5/8)	2	16,9	37,3
FOOT VALVE:		0204050010000								

(*): B/S = Ballistic Spherical (Spherical buttons on Outer Gauge and ballistic button on the other positions)

P5SH shank (P5SH) hammer



Features: _Length shank = 194,5mm / _12 Splines / _Height of Foot Valve above strike face = 48,0mm

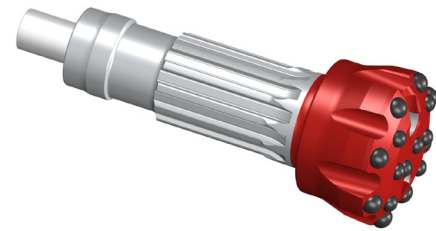
Diameter		Code	Description	No. x Button diameter, mm (inch)				Flushing holes	Weight Approx	
Inch	mm			Outer gauge 35°	Inner gauge 20°	Front 0°	Concavity 0°		kg	Lbs
5 3/4"	146.00	+ 0223050000012	Dome - Concave 10W*	10x16 (5/8)	6x16 (5/8)	2x16 (5/8)	2x16 (5/8)	2	15,0	33,1
5 1/2"	140.00	+ 0223050000004	Flat Face - "Quarry"	8x16 (5/8)		8x16 (5/8)		2	14,6	32,2
5 3/4"	146.00	+ 0223050000001	Flat Face - Heavy	8x19 (3/4)		7x16 (5/8)		2	15,3	33,7
5 3/4"	146.00	+ 0223050000003	Flat face - "Quarry"	8x16 (5/8)		8x16 (5/8)		2	15,0	33,0
6"	152.00	+ 0223050000002	Flat Face - Heavy	8x19 (3/4)		8x16 (5/8)		2	15,8	34,8
5 5/16"	135.00	• 0223050000011	Concave - A1 B/S**	9x14 (9/16)		6x14 (9/16)	5x14 (9/16)	3	14,0	30,8
5 3/4"	146.00	+ 0223050000006	Concave	8x16 (5/8)		4x16 (5/8)	4x16 (5/8)	2	14,8	32,6
6"	152.00	+ 0223050000010	Concave - Heavy	8x19 (3/4)		4x16 (5/8)	4x16 (5/8)	2	15,6	34,4
6"	152.00	• 0223050000207	Concave	9x16 (5/8)		6x16 (5/8)	4x16 (5/8)	3	15,5	34,2
FOOT VALVE		+ 0223050010002								
		• 0223050010003								

(*): W = Wings

+: Bits use Foot valve 0223050010002

•: Bits use foot valve 0223050010003

(**): B/S = Ballistic Spherical (Spherical buttons on Outer Gauge and ballistic button on the other positions)



QL-5 shank (PM5.2, PM5.2EX, PM55) hammer

Features: _Shank length = 209mm / _12 Splines / _Height of Foot Valve above strike face = 57.0mm

Diameter		Code	Description	No. x Button diameter, mm (inch)				Flushing holes	Weight Approx	
Inch	mm			Outer gauge 35°	Inner gauge 20°	Front 0°	Concavity 0°		kg	Lbs
5 1/2"	140.00	0204050000030	Dome	8x19 (3/4)	4x16 (5/8)	3x16 (5/8)		2	16,4	36,2
5 1/2"	140.00	0204050000042	Dome -Heavy Ballistic	8x19 (3/4)	4x16 (5/8)	3x16 (5/8)		2	16,4	36,2
5 1/2"	140.00	0204050000053	Dome - Welding	8x16 (5/8)	4x16 (5/8)	3x16 (5/8)		2	16,3	36,0
5 1/2"	140.00	0204050000091	Dome - Heavy Retractable	9x19 (3/4)	6x16 (5/8)	4x16 (5/8)		3	16,3	36,0
5 3/4"	146.00	0204050000083	Dome - Retractable Wear Pad	9x16 (5/8)	3x16 (5/8)	6x16 (5/8)		3	17,4	38,4
5 3/4"	146.00	0204050000081	Dome -Welding	9x16 (5/8)	3x16 (5/8)	6x16 (5/8)		3	17,2	38,0
5 3/4"	146.00	0204050000088	Dome - Concave 10W*	10x16 (5/8)	6x16 (5/8)	2x16 (5/8)	2x16 (5/8)	2	17,0	37,2
5 3/4"	146.00	0204050000062	Dome - Heavy	8x19 (3/4)	4x16 (5/8)	4x16 (5/8)		2	16,5	36,4
5 3/4"	146.00	0204050000076	Dome - Heavy Retractable	8x19 (3/4)	4x16 (5/8)	4x16 (5/8)		2	16,7	36,8
5 3/4"	146.00	0204050000020	Dome - Heavy Welding	8x19 (3/4)	4x16 (5/8)	4x16 (5/8)		2	16,2	35,7
5 3/4"	146.00	0204050000094	Dome - Heavy A1	8x19 (3/4)	4x19 (3/4)	4x16 (5/8)		2	17,0	37,5
5 3/4"	146.00	0204050000099	Dome - Heavy A2	8x19 (3/4)	4x19 (3/4)	4x16 (5/8)		2	17,0	37,5
6 1/8"	155.50	0204050000077	Dome - Heavy HQ**	9x19 (3/4)	3x19 (3/4)	6x16 (5/8)		3	18,7	41,2
6 1/8"	155.50	0204050000078	Dome - Heavy A1	9x19 (3/4)	3x19 (3/4)	6x16 (5/8)		3	19,1	42,1
5 19/32"	142.00	0204050000048	Flat Face	8x16 (5/8)		8x16 (5/8)		2	16,1	35,5
5 3/4"	146.00	0204050000014	Flat Face - "Quarry"	8x16 (5/8)		8x16 (5/8)		2	16,2	35,7
5 3/4"	146.00	0204050000061	Flat Face - Heavy	8x19 (3/4)		7x16 (5/8)		2	17,0	37,5
5 5/16"	135.00	0204050002086	Concave - B/S***	9x16 (5/8)		6x14 (9/16)	5x14 (9/16)	3	15,6	34,4
5 5/16"	135.00	0204050002087	Concave - A1 B/S***	9x14 (9/16)		6x14 (9/16)	5x14 (9/16)	3	15,5	34,2
5 1/2"	140.00	0204050000089	Concave - *1	8x16 (5/8)		4x16 (5/8)	3x16 (5/8)	2	16,3	36,0
5 1/2"	140.00	0204050000003	Concave - *2	8x16 (5/8)		4x16 (5/8)	3x16 (5/8)	2	16,3	36,0
5 3/4"	146.00	0204050000012	Concave - "Quarry"	8x16 (5/8)		4x16 (5/8)	4x16 (5/8)	2	17,0	37,5
5 3/4"	146.00	0204050000071	Concave - Heavy Retractable	8x19 (3/4)		4x16 (5/8)	3x16 (5/8)	2	17,0	37,5
6 1/8"	155.50	0204050000070	Concave - Heavy	8x19 (3/4)		4x16 (5/8)	4x16 (5/8)	2	19,0	41,9
FOOT VALVE		204050010011								

(*) : W = Wings

(**) : HQ = Hard Quartzite

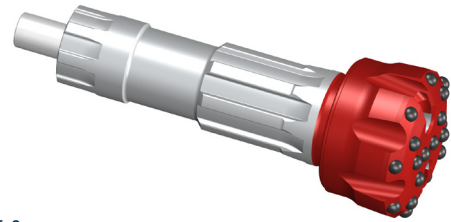
(***) : B/S = Ballistic Spherical (Spherical buttons on Outer Gauge and ballistic button on the other positions)

(*1) : For Quarry - terrain hard and abrasive

(*2) : For Mine - terrain soft

This information can be modified without notice of Drillco S.A. May 2024 (Modif. 6)

□ DHD-360 shank (PM6.2) hammer



Features: _Length shank = 307mm / _8 Splines / _Height of Foot Valve above strike face 56.0mm

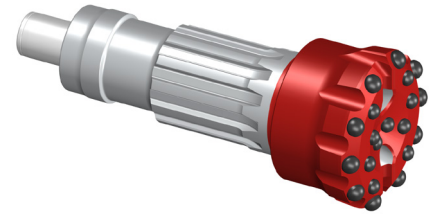
Diameter		Code	Description	No. x Button diameter, mm (inch)				Flushing holes	Weight Approx	
Inch	mm			Outer gauge 35°	Inner gauge 20°	Front 0°	Concavity 0°		kg	Lbs
6 1/2"	165.00	0204060000088	Dome	8x16 (5/8)	4x16 (5/8)	6x16 (5/8)		2	25,4	56,0
6 3/4"	171.50	0204060000096	Dome Double gauge - Welding	10x16 (5/8)	8x16 (5/8)	7x16 (5/8)		2	26,3	58,0
6 3/4"	171.50	0204060000137	Dome - Heavy A1 Retractable	9x19 (3/4)	3x19 (3/4)	6x16 (5/8)		3	26,0	57,3
6 3/4"	171.50	0204060000202	Dome - Heavy A3	9x19 (3/4)	6x19 (3/4)	5x16 (5/8)		3	25,7	56,7
6"	152.50	0204060000021	Flat Face	8x16 (5/8)		8x16 (5/8)		2	24,0	53,0
6 1/8"	155.50	0204060000024	Flat Face	10x16 (5/8)		9x16 (5/8)		2	25,0	55,0
8"	203.00	0204060000022	Flat Face	12x16 (5/8)		16x16 (5/8)		2	34,0	75,0
6"	152.50	0204060000025	Concave	8x16 (5/8)		4x16 (5/8)	4x16 (5/8)	2	23,0	51,0
6 1/8"	155.50	0204060000011	Concave	10x16 (5/8)		4x16 (5/8)	4x16 (5/8)	2	24,0	53,0
6 1/2"	165.00	0204060000173	Concave - Heavy	8x19 (3/4)		4x16 (5/8)	4x16 (5/8)	2	25,2	55,6
6 3/4"	171.50	0204060000158	Concave - Heavy Retractable 10W*	10x19 (3/4)		6x16 (5/8)	4x16 (5/8)	2	26,6	58,6
7 1/2"	190.50	0204060000048	Concave	10x16 (5/8)		4x16 (5/8)	8x16 (5/8)	2	30,0	66,1
8"	203.00	0204060000047	Concave - Welding	12x16 (5/8)		8x16 (5/8)	7x16 (5/8)	2	34,0	75,0
8 1/2"	216.00	0204060000046	Concave	12x16 (5/8)		10x16 (5/8)	8x16 (5/8)	2	37,0	81,6
8 3/8"	219.00	0204060000026	Concave	12x16 (5/8)	8x16 (5/8)	10x16 (5/8)	9x16 (5/8)	2	38,5	84,9
9 1/2"	241.00	0204060000110	Concave - Dome	12x16 (5/8)		6x16 (5/8)	9x16 (5/8)	2	43,5	96,0
10"	254.00	0204060000105	Concave	18x19 (3/4)		3x19 (3/4)	9x19 (3/4)	3	44,0	97,0

FOOT VALVE 204060010003

(*) : W = Wings.

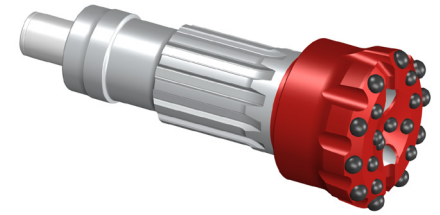


QL-6 shank (PM6.2, PM6.2EX) hammer



Features: _Length shank = 254mm / _12 Splines / _Height of Foot Valve above strike face 59.0mm

Diameter		Code	Description	No. x Button diameter, mm (inch)				Flushing holes	Weight Approx	
Inch	mm			Outer gauge 35°	Inner gauge 20°	Front 0°	Concavity 0°		kg	Lbs
6 1/8"	155.50	0204060000068	Dome - Ballistic	8x16 (5/8)	4x16 (5/8)	5x16 (5/8)		2	23,0	50,7
6 1/2"	165.00	0204060000077	Dome - Heavy	8x19 (3/4)	4x16 (5/8)	5x16 (5/8)		2	24,0	53,0
6 1/2"	165.00	0204060000143	Dome - Heavy Retractable	8x19 (3/4)	4x16 (5/8)	5x16 (5/8)		2	24,2	53,5
6 1/2"	165.00	0204060000147	Dome - Heavy A1	9x19 (3/4)	6x16 (5/8)	5x16 (5/8)		3	25,0	55,0
6 1/2"	165.00	0204060000166	Dome - Heavy A2	9x19 (3/4)	6x19 (3/4)	5x16 (5/8)		3	25,0	55,0
6 3/4"	171.50	0204060000095	Dome - Heavy A1	9x19 (3/4)	3x19 (3/4)	6x16 (5/8)		3	25,5	56,0
6 3/4"	171.50	0204060000135	Dome - Heavy A1 Retractable	9x19 (3/4)	3x19 (3/4)	6x16 (5/8)		3	26,0	57,3
6 3/4"	171.50	0204060000140	Dome - Heavy A2	9x19 (3/4)	6x16 (5/8)	5x16 (5/8)		3	25,6	56,4
6 3/4"	171.50	0204060000184	Dome - Heavy A2 Retractable	9x19 (3/4)	6x16 (5/8)	5x16 (5/8)		3	25,6	56,4
6 3/4"	171.50	0204060000136	Dome - Heavy A2 Retractable Wear pad	9x19 (3/4)	6x16 (5/8)	5x16 (5/8)		3	25,6	56,4
6 3/4"	171.50	0204060000174	Dome - Heavy A3	9x19 (3/4)	6x19 (3/4)	5x19 (3/4)		3	25,6	56,4
6 3/4"	171.50	0204060000086	Dome - Heavy B/S**	9x19 (3/4)	3x19 (3/4)	5x19 (3/4)		3	26,0	57,3
6 3/4"	171.50	0204060000192	Dome - Heavy A4	9x19 (3/4)	6x19 (3/4)	5x19 (3/4)		3	25,6	56,4
7 1/2"	190.50	0204060000186	Dome - Heavy A1 Retr 10W*	10x19 (3/4)	6x19 (3/4)	5x19 (3/4)		2	30,0	66,0
7 1/2"	190.50	0204060000169	Dome - Heavy Retr 10W*	10x19 (3/4)	6x19 (3/4)	6x19 (3/4)		2	30,0	66,0
7 1/2"	190.5	0204060000198	Dome Double Gauge - Heavy Retractable	10x19 (3/4)	4x19 (3/4)	4x19 (3/4)		2	29,6	65,3
6 1/8"	156.00	0204060000029	Flat Face	8x16 (5/8)		8x16 (5/8)		2	24,0	53,0
6 1/2"	165.00	0204060000167	Flat Face - Heavy	8x19 (3/4)		9x16 (5/8)		2	25,0	55,0
6 1/2"	165.00	0204060000176	Flat Face - Heavy 10W*	10x19 (3/4)		8x19 (3/4)		2	25,0	55,0
6 1/2"	165.00	0204060000178	Flat Face - Heavy	9x19 (3/4)		8x19 (3/4)		3	25,0	55,0
6 1/2"	165.00	0204060000058	Flat Face - Welding	8x16 (5/8)		11x16 (5/8)		2	25,0	55,0
6 1/2"	165.00	0204060000189	Flat Face	10x18		10x18		2	24,7	54,5
6 1/2"	165.00	0204060000193	Flat Face - QS	10x18		10x18		2	24,7	54,5
6 1/2"	165.00	0204060000204	Flat Face - Ballistic	9x16 (5/8)		11x16 (5/8)		3	25,0	55,0
6 1/2"	165.00	0204060000205	Flat Face - Heavy A1	9x19 (3/4)		11x16 (5/8)		3	25,0	55,0
6 1/2"	165.00	0204060000206	Flat Face - Retractable Wear pad	8x16 (5/8)		11x16 (5/8)		2	24,7	54,5
6 3/4"	171.50	0204060000165	Flat Face - Heavy 10W* B1	10x19 (3/4)		9x19 (3/4)		2	26,0	57,0
6 3/4"	171.50	0204060000156	Flat Face - Heavy 10W*	10x19 (3/4)		9x19 (3/4)		2	26,0	57,0
6 3/4"	171.50	0204060000203	Flat Face - Heavy Welding	9x19 (3/4)		9x19 (3/4)		3	25,4	56,0
7 1/2"	190.50	0204060000188	Flat Face - Heavy 10W*	10x19 (3/4)		11x19 (3/4)		2	30,0	66,0



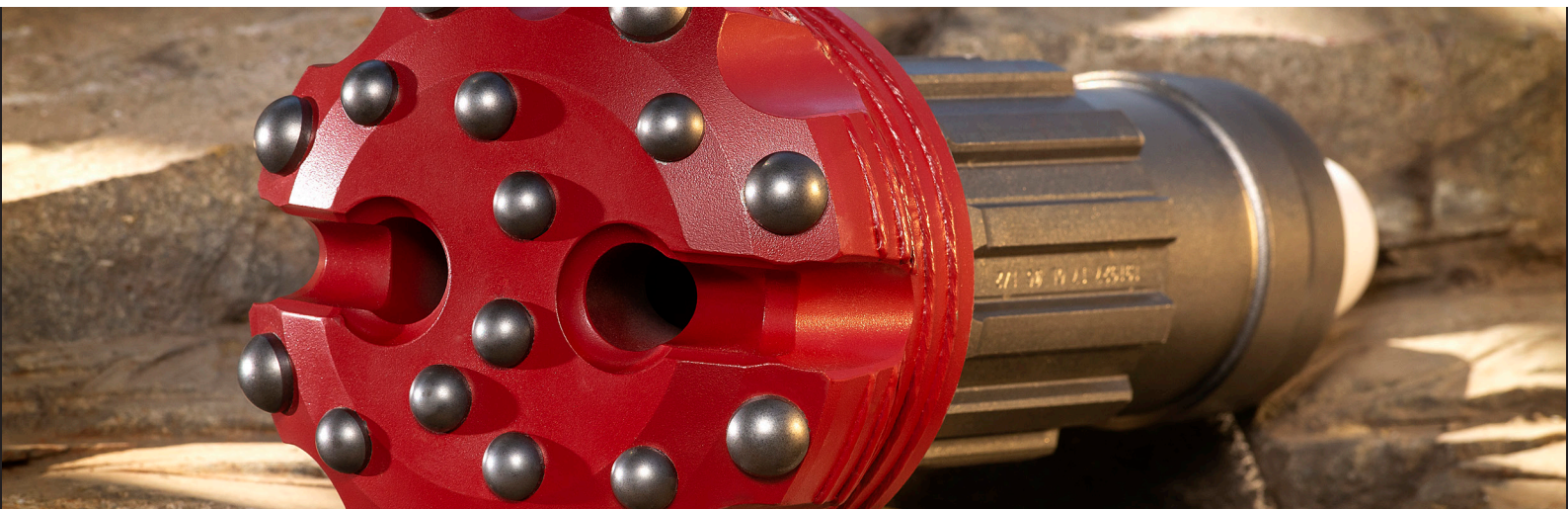
QL-6 shank (PM6.2, PM6.2EX) hammer

Features: _Length shank = 254mm / _12 Splines / _Height of Foot Valve above strike face 59.0mm

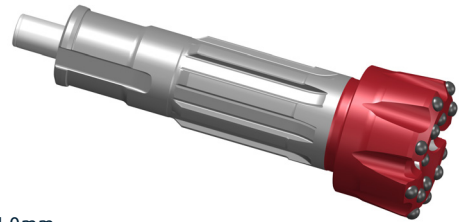
Diameter		Code	Description	No. x Button diameter, mm (inch)				Flushing holes	Weight Approx	
Inch	mm			Outer gauge 35°	Inner gauge 20°	Front 0°	Concavity 0°		kg	Lbs
6"	152.40	0204060000207	Concave	8x16 (5/8)		4x16 (5/8)	4x16 (5/8)	2	23,0	50,7
6 1/2"	165.00	0204060000162	Concave - Double Gauge	9x19 (3/4)	3x19 (3/4)	3x19 (3/4)	5x16 (5/8)	3	25,0	55,1
6 1/2"	165.00	0204060000075	Concave - Heavy	8x19 (3/4)		4x16 (5/8)	4x16 (5/8)	2	24,6	54,2
6 1/2"	165.00	0204060000146	Concave - Heavy "MINING"	10x19 (3/4)		6x16 (5/8)	4x16 (5/8)	2	25,0	55,1
6 1/2"	165.00	0204060000161	Concave - Heavy "MINING" B1***	10x19 (3/4)		6x16 (5/8)	4x16 (5/8)	2	25,0	55,1
6 1/2"	165.00	0204060000195	Concave	8x16 (5/8)		4x16 (5/8)	4x16 (5/8)	2	24,4	53,8
6 3/4"	171.50	0204060000115	Concave - Heavy "MINING"	10x19 (3/4)		6x16 (5/8)	4x16 (5/8)	2	25,8	56,9
6 3/4"	171.50	0204060000159	Concave - Heavy 10W R	10x19 (3/4)		6x16 (5/8)	4x16 (5/8)	2	26,0	57,3
6 3/4"	171.50	0204060000160	Concave - Heavy A1 10W*	10x19 (3/4)		4x19 (3/4)	4x19 (3/4)	2	26,0	57,3
7 1/2"	190.50	0204060000138	Concave - B/S** Retractable Wear Pad	10x16 (5/8)		4x16 (5/8)	8x16 (5/8)	2	29,2	64,4
7 1/2"	190.50	0204060000139	Concave - Welding	10x16 (5/8)		4x16 (5/8)	8x16 (5/8)	2	29,3	64,6
7 1/2"	190.50	0204060000199	Concave - Heavy Retractable	10x19 (3/4)		6x19 (3/4)	6x19 (3/4)	2	30,0	66,0
7 7/8"	200.00	0204060000177	Concave - Heavy B/S** Retrac	12x19 (3/4)	6x16 (5/8)	3x16 (5/8)	6x16 (5/8)	3	30,9	68,1
7 7/8"	200.00	0204060000108	Concave - Heavy Retractable	12x19 (3/4)	6x16 (5/8)	3x16 (5/8)	6x16 (5/8)	3	30,9	68,1
7 7/8"	200.00	0204060000121	Concave - Retractable	12x16 (5/8)	6x16 (5/8)	3x16 (5/8)	6x16 (5/8)	3	29,9	66,0
8"	203.20	0204060000201	Concavo - Heavy A1	12x19 (3/4)	6x16 (5/8)	3x16 (5/8)	6x16 (5/8)	3	31,3	69,0
8 1/2"	216.00	0204060000175	Concave - Heavy	12x19 (3/4)	6x19 (3/4)	3x16 (5/8)	8x16 (5/8)	3	31,6	69,7

FOOT VALVE 0204060010013

(*) : W = Wings.



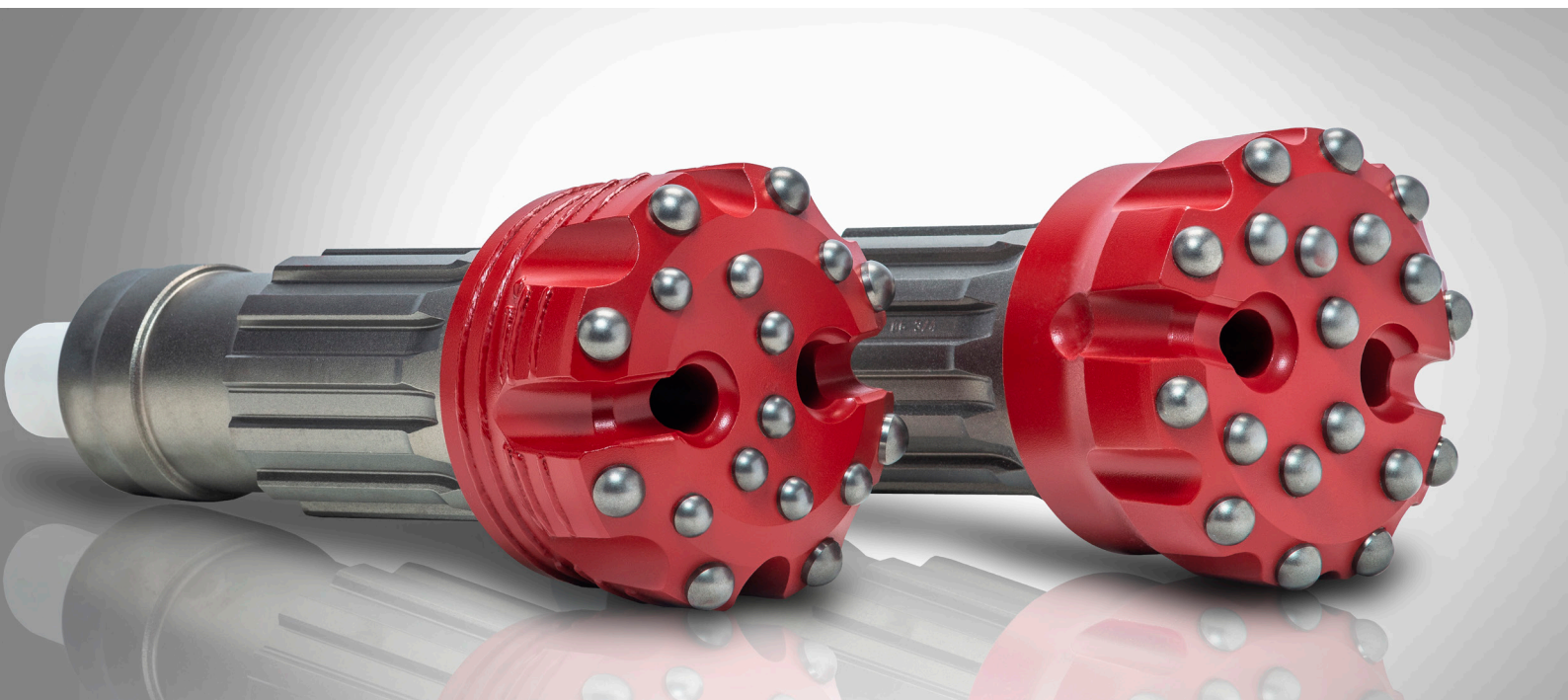
SD-6 shank (PM6.2) hammer



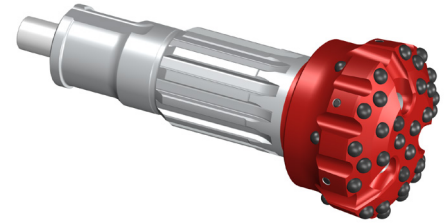
Features: _Length shank = 324mm / _8 Splines / _Height of Foot Valve above strike face 54.0mm

Diameter		Code	Description	No. x Button diameter, mm (inch)				Flushing holes	Weight Approx	
Inchm	m			Outer gauge 35°	Inner gauge 20°	Front 0°	Concavity 0°		kg	Lbs
6"	152.50	0204060000009	Flat Face		8x16 (5/8)	8x16 (5/8)		2	26,0	57,3
6"	152.50	0204060000117	Flat Face - Welding		8x16 (5/8)	8x16 (5/8)		2	26,0	57,3
6 1/8"	155.50	0204060000033	Flat face		10x16 (5/8)	9x16 (5/8)		2	26,7	58,9
6 1/2"	165.00	0204060000036	Flat Face		8x16 (5/8)	11x16 (5/8)		2	28,0	61,7
8"	203.00	0204060000015	Flat Face		12x16 (5/8)	16x16 (5/8)		2	36,0	79,4
6"	152.00	0204060000008	Concave		8x16 (5/8)	4x16 (5/8)	4x16 (5/8)	2	25,7	56,7
6 1/8"	155.50	0204060000040	Concave		10x16 (5/8)	4x16 (5/8)	4x16 (5/8)	2	26,0	57,3
6 1/8"	155.50	0204060000152	Concave P1		8x16 (5/8)	4x16 (5/8)	4x16 (5/8)	2	26,0	57,3
6 3/4"	171.50	0204060000002	Concave		10x16 (5/8)	4x16 (5/8)	4x16 (5/8)	2	28,0	61,7
7 1/2"	190.50	0204060000038	Concave		10x16 (5/8)	4x16 (5/8)	8x16 (5/8)	2	32,0	70,5
8"	203.00	0204060000051	Concave		12x16 (5/8)	8x16 (5/8)	7x16 (5/8)	2	36,0	79,4

FOOT VALVE 0204060010002



PUMA-7.1 shank (P7.1) hammer



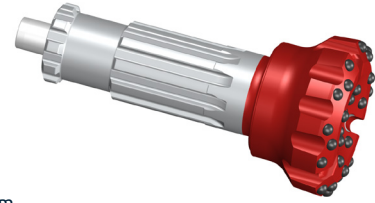
Features: _Length shank = 336mm / _12 Splines / _Height Foot Valve above strike face = 57mm

Diameter		Code	Description	No. x Button diameter, mm (inch)				Flushing holes	Weight Approx	
Inch	mm			Outer gauge 35°	Inner gauge 20°	Front 0°	Concavity 0°		kg	Lbs
7 7/8"	200.00	0201070000015	Dome Double Gauge - Heavy Retractable	12x19 (3/4)	9x19 (3/4)	7x16 (5/8)		3	45,3	100,0
7 7/8"	200.00	0201070000016	Dome Double Gauge - Heavy Retractable D*	12x19 (3/4)	9x19 (3/4)	7x16 (5/8)		3	45,3	100,0
8 1/2"	216.00	0201070000026	Dome Double Gauge - Heavy Retractable"	12x19 (3/4)	12x19 (3/4)	6x19 (3/4)		3	48,0	105,8
7 7/8"	200.00	0201070000001	Concave - Retractable	12x16 (5/8)	6x16 (5/8)	9x16 (5/8)		3	44,0	97,0
7 7/8"	200.00	0201070000004	Concave	12x16 (5/8)	6x16 (5/8)	9x16 (5/8)		3	44,0	97,0
7 7/8"	200.00	0201070000005	Concave - Heavy	12x19 (3/4)	6x16 (5/8)	9x16 (5/8)		3	44,0	97,0
7 7/8"	200.00	0201070000006	Concave - Double Gauge	12x16 (5/8)	6x16 (5/8)	10x16 (5/8)		3	44,0	97,0
7 7/8"	200.00	0201070000007	Concave - Heavy Retractable	12x19 (3/4)	6x16 (5/8)	9x16 (5/8)		3	44,0	97,0
7 7/8"	200.00	0201070000008	Concave - Heavy B/S** Retractable	12x19 (3/4)	6x16 (5/8)	9x16 (5/8)		3	44,0	97,0
7 7/8"	200.00	0201070000017	Concave - Double Gauge Heavy Retractable 2 Holes	12x19 (3/4)	6x19 (3/4)	12x19 (3/4)		2	45,7	100,8
7 7/8"	200.00	0201070000022	Concave - Heavy Retractable Wear pad	12x19 (3/4)	6x16 (5/8)	9x16 (5/8)		3	44,0	97,0
8 1/2"	200.00	0201070000009	Concave - Ballistic Welding	12x16 (5/8)		10x16 (5/8)	8x16 (5/8)	3	48,0	105,8
8 1/2"	216.00	0201070000012	Concave - Welding	12x16 (5/8)		10x16 (5/8)	8x16 (5/8)	3	48,0	105,8
8 1/2"	216.00	0201070000018	Concave - Dome B/S** Wear pad	12x16 (5/8)	8x16 (5/8)	12x16 (5/8)		2	48,5	107,0
8 1/2"	216.00	0201070000019	Concave - Dome B/S** Retractable	12x16 (5/8)	8x16 (5/8)	12x16 (5/8)		2	48,5	107,0
8 1/2"	216.00	0201070000021	Concave - Dome 3 Holes B/S** Retractable	12x16 (5/8)	6x16 (5/8)	15x16 (5/8)		3	48,5	107,0
8 1/2"	216.00	0201070000023	Concave - Dome A1 B/S** Retractable	12x19 (3/4)	6x19 (3/4)	9x19 (3/4)		3	48,0	105,8
8 1/2"	216.00	0201070000024	Concave - Heavy Retractable	12x19 (3/4)	6x19 (3/4)	10x16 (5/8)		3	48,0	105,8
8 1/2"	216.00	0201070000025	Concave - Dome 3 Holes Retractable	12x16 (5/8)	6x16 (5/8)	15x16 (5/8)		3	48,0	105,8
8 1/2"	216.00	0201070000026	Concave - Dome Double Gauge Retractable	12x19 (3/4)	6x19 (3/4)	12x19 (3/4)		3	48,0	105,8
8 3/4"	222.00	0201070000010	Concave - Heavy Retractable	12x19 (3/4)	6x19 (3/4)	11x16 (5/8)		3	55,8	123,0
8 3/4"	222.00	0201070000014	Concave - Ballistic Welding	12x16 (5/8)		10x16 (5/8)	8x16 (5/8)	2	51,6	113,8
FOOT VALVE		0201070010001								

(*) : D = Diamond buttons.

(**) : B/S = Ballistic Spherical (Spherical buttons on Outer Gauge and ballistic button on the other positions)

DHD-380 shank (P8.1) hammer

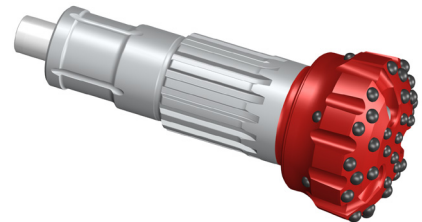


Features: _Length shank = 349.5mm / _10 Splines / _Height Foot Valve above strike face = 53.0mm

Diameter		Code	Description	No. x Button diameter, mm (inch)				Flushing holes	Weight Approx	
Inch	m			Outer gauge 35°	Inner gauge 20°	Front 0°	Concavity 0°		kg	Lbs
8"	203.00	0204080000023	Flat Face	12x16 (5/8)		16x16 (5/8)		2	50,0	110,2
10"	254.00	0204080000024	Flat Face	12x19 (3/4)	6x19 (3/4)	13x19 (3/4)		3	66,0	145,5
8"	203.00	0204080000098	Concave - Heavy	12x19 (3/4)	6x16 (5/8)	3x16 (5/8)	6x16 (5/8)	3	49,0	108,0
8 1/2"	216.00	0204080000063	Concave - Heavy Retractable	12x19 (3/4)	6x19 (3/4)	3x16 (5/8)	8x16 (5/8)	3	52,0	114,6
8 3/4"	222.00	0204080000061	Concave - Dome	12x16 (5/8)	6x16 (5/8)	9x16 (5/8)	8x16 (5/8)	3	51,7	114,0
9 1/2"	241.00	0204080000038	Concave - Dome	12x16 (5/8)	8x16 (5/8)	6x16 (5/8)	9x16 (5/8)	2	59,5	131,2
10"	254.00	0204080000058	Concave	12x19 (3/4)	6x19 (3/4)	3x16 (5/8)	9x16 (5/8)	3	64,0	141,1

FOOT VALVE 0204080010002

PUMA-8.1 shank (PM8.1, PM8.2) hammer



Features: _Length shank = 350mm / _16 Splines / _Height Foot Valve above strike face = 55mm

Diameter		Code	Description	No. x Button diameter, mm (inch)				Flushing holes	Weight Approx	
Inch	mm			Outer gauge 35°	Inner gauge 20°	Front 0°	Concavity 0°		kg	Lbs
8 3/4"	222.00	0201080000042	Dome Double Gauge - Heavy Retractable	12x19 (3/4)	12x19 (3/4)	8x16 (5/8)		3	54,7	120,6
8 3/4"	222.00	0201080000043	Dome Double Gauge - Heavy Retractable A1	12x19 (3/4)	12x19 (3/4)	8x16 (5/8)		3	54,7	120,6
9"	228.50	0201080000041	Dome Double Gauge - Heavy	12x19 (3/4)	9x19 (3/4)	11x16 (5/8)		3	58,0	128,0
8 1/2"	216.00	0201080000044	Concave - Dome B/S* Retractable	12x16 (5/8)	8x16 (5/8)	12x16 (5/8)		2	53,8	118,6
8 1/2"	216.00	0201080000046	Concave - Dome 3 Holes B/S* Retractable	12x16 (5/8)	6x16 (5/8)	15x16 (5/8)		3	53,6	118,2
8 3/4"	222.00	0201080000034	Concave - Dome Retractable	12x16 (5/8)	6x16 (5/8)	17x16 (5/8)		3	60,0	132,3
8 3/4"	222.00	0201080000035	Concave - Heavy Retractable	12x19 (3/4)	6x19 (3/4)	11x16 (5/8)		3	58,7	129,4
8 3/4"	222.00	0201080000038	Concave - Heavy Retractable HA**	12x19 (3/4)	6x19 (3/4)	11x16 (5/8)		3	58,7	129,4
8 3/4"	222.00	0201080000039	Concave - Heavy "M"*** Retractable	12x19 (3/4)	6x19 (3/4)	11x16 (5/8)		3	58,7	129,4
8 3/4"	222.00	0201080000048	Concave Double Gauge - Heavy Retractable - Almohadilla de desgaste	12x19 (3/4)	6x19 (3/4)	6x19 (3/4)	7x16 (5/8)	3	55,2	121,7
9"	228.50	0201080000047	Concave Double Gauge - Heavy	12x19 (3/4)	6x19 (3/4)	6x19 (3/4)	7x16 (5/8)	3	55,5	122,4

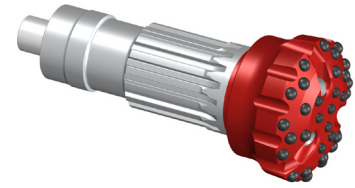
FOOT VALVE 201080010000

(*) : B/S = Ballistic Spherical (Spherical buttons on Outer Gauge and ballistic button on the other positions)

(**) : HA = High Abrasive.

(***) : "M" = Mine.

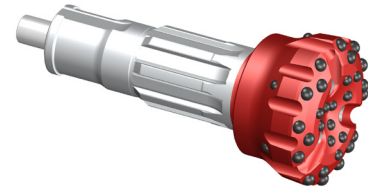
QL-8 shank (PM8.1, PM8.2) hammer



Features: _Length shank = 332mm / _16 Splines / _Height Foot Valve above strike face = 53.5mm

Diameter		Code	Description	No. x Button diameter, mm (inch)				Flushing holes	Weight Approx	
Inch	mm			Outer gauge 35°	Inner gauge 20°	Front 0°	Concavity 0°		kg	Lbs
8 1/2"	216.00	0204080000100	Dome - Heavy Retractable	12x19 (3/4)	6x19 (3/4)	11x16 (5/8)		3	52,0	114,6
8 1/2"	216.00	0204080000119	Dome - Double Gauge Heavy	12x19 (3/4)	12x19 (3/4)	6x19 (3/4)		3	52,0	114,6
8 3/4"	222.00	0204080000113	Dome - Double Gauge Heavy	12x19 (3/4)	12x19 (3/4)	8x16 (5/8)		3	53,2	117,3
8 3/4"	222.00	0204080000099	Dome - Heavy	12x19 (3/4)	6x19 (3/4)	11x16 (5/8)		3	60,5	133,4
9 1/2"	241.00	0204080000107	Dome Double Gauge - Heavy Retractable A1	12x19 (3/4)	15x19 (3/4)	9x16 (5/8)		3	58,1	128,0
9 1/2"	241.00	0204080000104	Dome Double Gauge - Heavy Retractable	12x19 (3/4)	9x19 (3/4)	11x16 (5/8)		3	62,8	138,5
9 1/2"	241.00	0204080000121	Dome Double Gauge - Heavy A2 Welding Retractable	12x19 (3/4)	15x19 (3/4)	9x16 (5/8)		3	62,0	136,7
9 1/2"	241.00	0204080000062	Flat Face - Heavy Retractable	12x19 (3/4)	6x19 (3/4)	12x19 (3/4)		3	62,5	137,8
10"	254.00	0204080000056	Flat Face - Retractable	12x19 (3/4)	6x19 (3/4)	13x16 (5/8)		3	65,7	144,8
8 1/2"	216.00	0204080000106	Concave - Dome Multiwings	12x19 (3/4)	8x19 (3/4)	6x19 (3/4)	5x19 (3/4)	2	52,0	114,6
8 3/4"	222.00	0204080000114	Concave - Double Gauge Heavy	12x19 (3/4)	6x19 (3/4)	3x19 (3/4)	8x19 (3/4)	3	51,7	114,0
9"	228.50	0204080000070	Concave - Heavy Retractable	12x19 (3/4)	6x19 (3/4)	3x16 (5/8)	8x16 (5/8)	3	61,4	135,4
FOOT VALVE		204080010004								

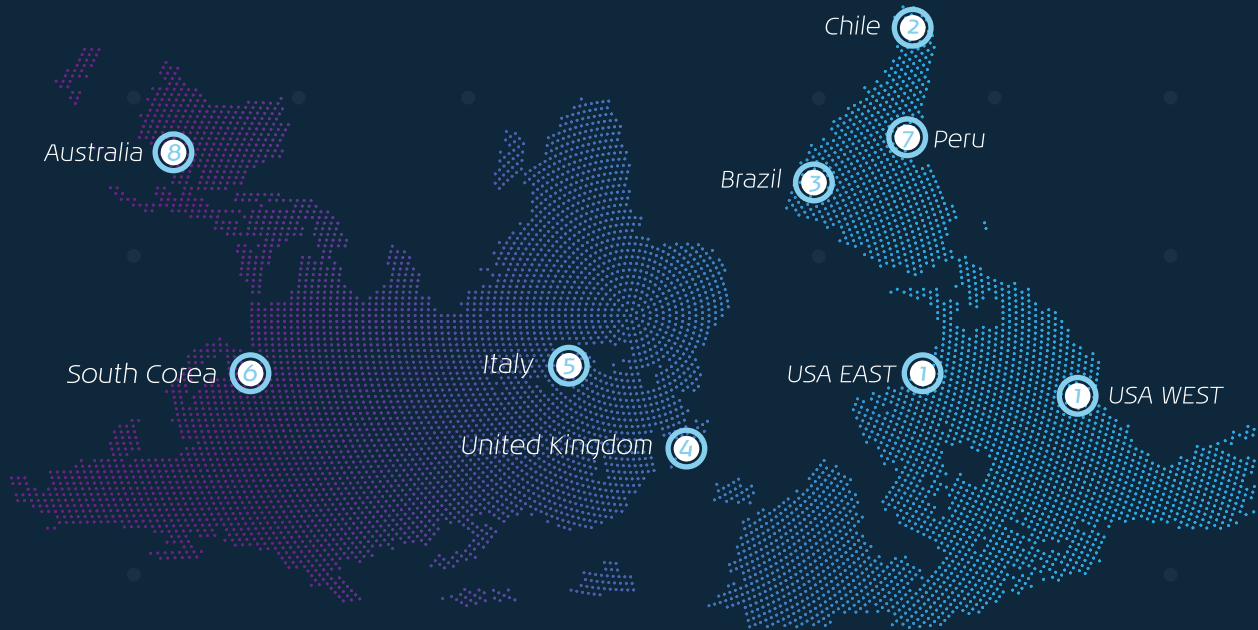
SD-8 shank (P7.1, P8.1) hammer



Features: _Length shank = 332mm / _16 Splines / _Height Foot Valve above strike face = 53.5mm

Diameter		Code	Description	No. x Button diameter, mm (inch)				Flushing holes	Weight Approx	
Inch	mm			Outer gauge 35°	Inner gauge 20°	Front 0°	Concavity 0°		kg	Lbs
8"	203.00	0204080000117	Dome Double Gauge - Heavy Retractable Wear Pad	12x19 (3/4)	9x19 (3/4)	7x16 (5/8)		3	42,7	94,1
8"	203.00	0204080000073	Dome Double Gauge - Heavy Retractable	12x19 (3/4)	9x19 (3/4)	7x16 (5/8)		3	42,7	94,1
8"	203.00	0204080000022	Flat Face	12x16 (5/8)		16x16 (5/8)		2	43,0	94,8
8 1/2"	216.00	0204080000035	Flat Face	12x16 (5/8)		18x16 (5/8)		2	48,0	105,8
9 1/2"	241.00	0204080000039	Flat Face	12x16 (5/8)		23x16 (5/8)		3	56,0	123,5
10"	254.00	0204080000018	Flat Face - Retractable	12x19 (3/4)	6x19 (3/4)	13x19 (3/4)		3	57,1	125,8
8"	203.00	0204080000053	Concave - Retractable	12x16 (5/8)	6x16 (5/8)	3x16 (5/8)	6x16 (5/8)	3	42,0	92,6
8 1/2"	216.00	0204080000065	Concave - Heavy Retractable	12x19 (3/4)	6x19 (3/4)	3x16 (5/8)	8x16 (5/8)	3	45,5	100,3
9"	228.50	0204080000020	Concave - Heavy Retractable	12x19 (3/4)	6x19 (3/4)	3x16 (5/8)	8x16 (5/8)	3	53,0	116,8
10"	254.00	0204080000025	Concave	12x19 (3/4)	6x19 (3/4)	3x19 (3/4)	9x19 (3/4)	3	55,7	122,8
FOOT VALVE		0204080010001								

Our Products around **THE WORLD**



1 Drillco USA
Elko, NV
Atlanta, GA
Rockwood, PA
infousa@drillco.com

2 Drillco Chile
Santiago
infochile@drillco.com

3 Drillco Brazil
Santa Catarina
infobrazil@drillco.com

4 Drillco UK
Manchester
infoeuropa@drillco.com

5 Drillco Italy
Milan
info@drillco.it

6 Drillco Asia
Seoul, South Korea
infoasia@drillco.com

7 Drillco Peru
Lima
infoperu@drillco.com

8 Drillco Australia
Sydney
infoaustralia@drillco.com

Discover more at: www.drillco.com

CONTACT US

 | info@drillco.com

PUMA
BY DRILLCO

DRILLCO